

## CAMPUSES

- HURSTVILLE BOYS CAMPUS
- OATLEY SENIOR CAMPUS
- PEAKHURST CAMPUS
- PENSHURST GIRLS CAMPUS

## GRC – THE COLLEGE

Georges River College is a unique secondary College offering students unprecedented educational choices with four years of specialist 7-10 education in the three middle school Campuses: Hurstville Boys, 7- 10 boys education; Penshurst Girls, 7 – 10 girls education and Peakhurst, 7 – 10 coeducation.

Our students' middle school education is followed by two years in the adult learning environment at GRC Oatley Senior Campus. Our Senior Campus is co-educational and collegiate, providing a transition between school and university, TAFE or employment.

## CREATING YOUR FUTURE

Learning at GRC is about inspiring in students hope for the future and providing them with the skills to become confident future citizens and leaders.

Rich and balanced education programs develop well-rounded, confident and compassionate young people ready to transition to the opportunities that await them in the future.

Our students are challenged, they work hard and are encouraged to achieve their personal best.

Our teachers are all dedicated to the success of our 2800 students.

Please explore our websites to discover some of the opportunities provided by Georges River College.

**NOTE:** Students enrolled in our Middle School Campuses are the only students who have automatic entry to our Senior Campus.



## OPEN NIGHTS – FEBRUARY 2016

SEE BACK PAGE FOR FULL DETAILS



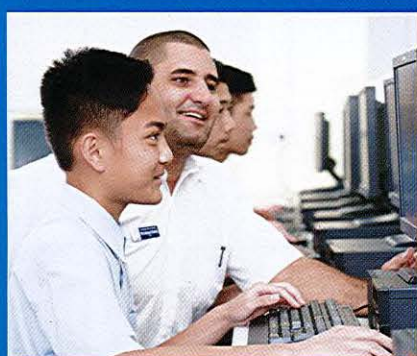
# HURSTVILLE BOYS CAMPUS

GRC Hurstville Boys Campus has a proud history reaching back to 1929. We have educated many successful Australians who have gone on to be leaders in the academic, business, political and sporting worlds.

GRC Hurstville Boys Campus provides your son with a focused and energetic learning environment highly suited to the needs of boys. We aim to provide our boys with the best possible education and we concentrate on the needs of each individual student.

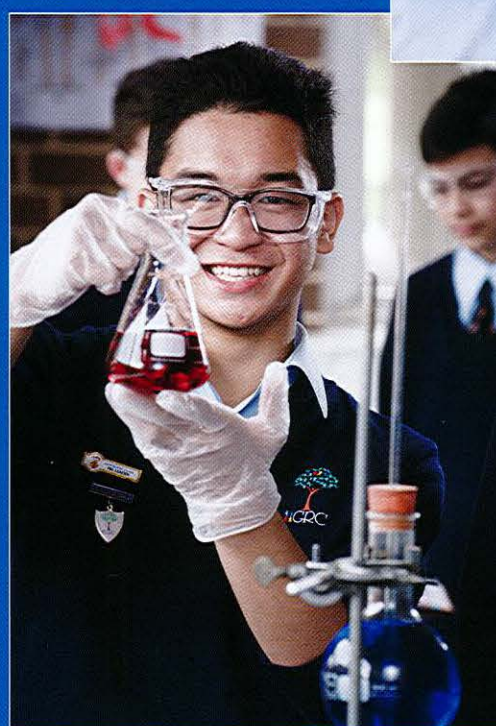
We ensure small class sizes to cater for individual learning needs and provide quality teaching strategies to maximise the potential of our 21st century learners. We have an excellent reputation for providing a quality education within a safe, caring and well disciplined environment.

GRC Hurstville Boys Campus provides leadership opportunities for all boys. Our school seeks to educate young men to become successful leaders and achievers in whatever field they choose.



In addition to the school's broad academic program students have many enrichment opportunities including outdoor education camps, an outstanding extra-curricular music program in conjunction with the other campuses, school musical, debating, chess and sport.

*"Thank you for looking after my precious son and always supporting him with exciting leadership roles and responsibilities, academic rigour and many sporting opportunities. He actually picked GRC Hurstville Boys Campus after researching many schools when he was in Year 6. I offered him any school in Sydney but there was a special attraction to Hurstville and I know we made a fabulous choice."*  
Parent.



# OATLEY SENIOR CAMPUS

GRC Oatley Senior Campus offers Year 11 and 12 students the opportunity to study for the HSC in a young adult learning environment, preparing you for the next stage of your life in a manner no other school can.

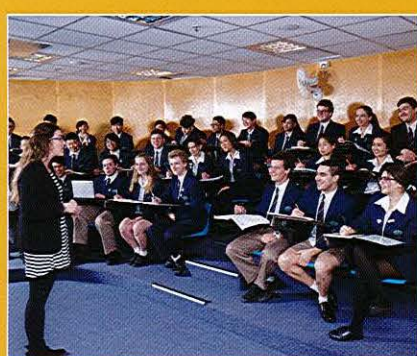
Offering over 80 senior subjects, Oatley has the broadest senior curriculum of any school or College in NSW. We offer all levels of all subjects studied as well as a broad range of Vocational Educational subjects.

Oatley Senior Campus is focused on developing students who are not only academically successful

but who are thoughtful citizens who contribute to their local community in a positive manner.

The individual education needs of students and maximising their HSC achievement during their senior years are a primary focus of our Campus.

Leadership plays an important role in the lives of our young people. Students are encouraged to develop and use leadership skills. These are skills which will carry them forward into the future.



We have a unique prefecture system which allows every student to have their leadership roles acknowledged.

**Statements by Year 12 students:**

*"I love it, I never want to leave."*

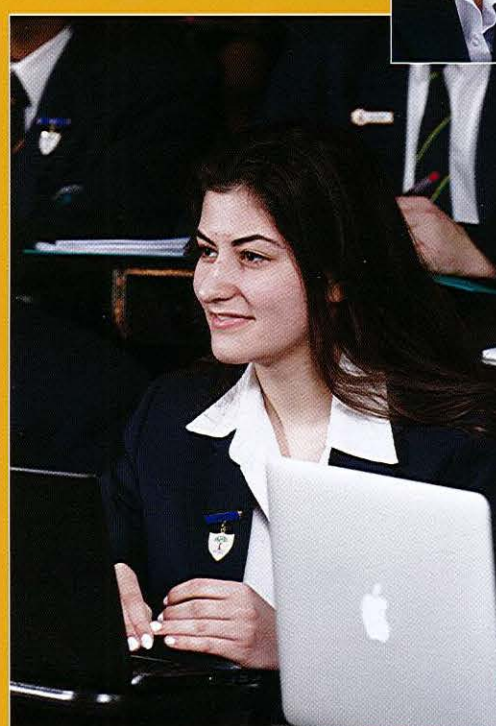
*"The teachers here know just what you need to do to succeed."*

*"I have known much kindness here."*  
International Student

*"The Campus facilities are fantastic, the Campus runs just like a university."*

*"My daughter has succeeded at this school beyond all my expectations."*

*"Students at Oatley are seriously focused, so we learn more."*  
International student





# PEAKHURST CAMPUS

At Peakhurst Campus we challenge our students by offering a multitude of dynamic and flexible academic, sporting and Creative & Performing Arts programs. As a specialist Years 7 – 10 campus our successful age specific programs focus totally on the learning needs of students in these middle years of schooling.

Selective Enrichment Classes – Years 7 and 8 Selective Enrichment Classes cater to the particular learning needs of our Gifted and Talented students and are designed to develop their potential.

Our Special Education Faculty – cares for and teaches our students who have moderate intellectual and physical disabilities. These students are integral to and highly valued by our school.

Primary Links exciting shared programs and positive initiatives involving our Partner Primary schools build strong relationships and allow for a smooth transition. These programs include Peakability – a highly successful dance enrichment program for students from local primary schools.



## Creative and Performing Arts

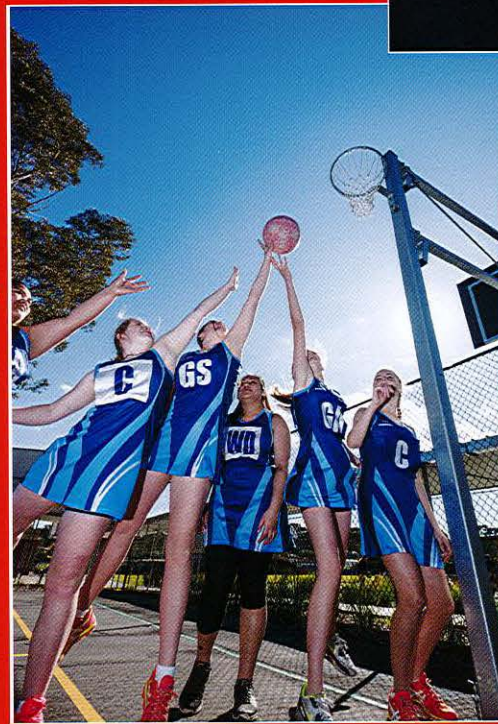
- Music talent development program
- Peaknote Gifted and talented vocal program
- Peakform – annual performing arts evening
- Peak View – annual creative arts competition
- 'Draw off' – public drawing competition
- Photography and digital media



**Sport and fitness** – the Campus offers a wide range of sports and activities designed to provide students with opportunities to develop talents, skills and fitness.

## Duke of Edinburgh

This exciting and globally recognised program encourages young people to have a go at something new, different and challenging.



# PENSHURST GIRLS CAMPUS

At Penshurst Girls Campus our focus is providing girls in Years 7 – 10 with an excellent and well rounded education. We foster a love of lifelong learning so that you will have the skills to succeed in our ever changing world. Our Primary Links program gives our future students a real experience of High School and ensures that their transition to High School is successful.

## Student Leadership

The school has a highly committed Student Representative Council and numerous opportunities

for students to be involved in leadership programs: Prefecture; Social Justice Committee; Environment Committee; Peer Support; Premier's Volunteering; Peer Tutoring and the Duke of Edinburgh.

## Creative and Performing Arts

Our staff are passionate about the Creative and Performing Arts and offer a world of opportunity in Dance, Drama, Music and the Arts.



## Opportunities include:

- GRC Concert band
- GRC Stage band
- Jazz Band
- School musical productions
- Specialist musical ensembles
- Dance ensembles

## A World of Opportunity

- A selective class in Year 7
- Gifted and Talented classes within individual subjects from Years 8 to 10
- Enrichment and engagement for all students in every classroom
- Outstanding learning support programs for individual students and small groups
- Integration of technology into classroom learning
- Rich language and cultural studies across all year groups
- Curriculum opportunities from agriculture, multi-media to woodwork and a very broad pattern of subjects offered from electives in Year 7 through to Year 10





# FOUR CAMPUSES ONE COLLEGE

GEORGES RIVER COLLEGE

## GRC – Four Campuses One College

Georges River College is known for its strong academic achievement and professional and vibrant educational provision. Each of our campuses offers a stimulating and challenging educational environment where young people can fulfil their potential and realise their ambitions.

Learning at GRC is about inspiring in students hope for the future and providing the skills for them to become confident citizens and leaders.

Our students are challenged, work hard and are encouraged to achieve their personal best.



### PEAKHURST CAMPUS

Peakhurst Campus delivers diverse, dynamic and flexible learning in an inclusive, collaborative and harmonious school community. Students are empowered to become self-motivated learners, critical and creative thinkers, to be compassionate, act with integrity and pursue personal excellence.



### PENSHURST GIRLS CAMPUS

At Penshurst Girls Campus we aim to educate our students to become independent thinkers who have a strong social conscience and personal integrity. We encourage each student to develop their individual talents and become responsible citizens.



### HURSTVILLE BOYS CAMPUS

GRC Hurstville Boys Campus provides your son with a focused and energetic learning environment highly suited to the needs of boys. We aim to provide our boys with the best possible education and we concentrate on the needs of each individual student.



### OATLEY SENIOR CAMPUS

GRC Oatley Senior Campus offers years 11 and 12 students the opportunity to study in a young adult learning environment where the success of our students at the HSC and in their transition to university, future study or the workplace is a measure of our success.

Students at GRC:

- Are expected to live by our values: Respect, Responsibility and Excellence
- Take responsibility for their own learning and contribute to the learning of others
- Are trained to be resilient, independent and confident
- Test the limits of their ability and aim to achieve their potential
- Develop effective and positive leadership skills

# OPEN NIGHT DETAILS



## GEORGES RIVER COLLEGE

### HURSTVILLE BOYS CAMPUS

Open Night – Wednesday 24 February  
6.30pm - 8.30pm

- Welcome and information session in the library
- Displays, performances and hands on activities in newly refurbished facilities
- Refreshments and question time

PRINCIPAL: Aphrodite Cox (Relieving)

Enquiries: 02 9587 3199

### OATLEY SENIOR CAMPUS

Open Night – Thursday 25 February  
6.00pm - 7.30pm

- Welcome
- Information session on our Platinum Classes
- Tours of the school – Staff and students from all KLA's will be available to answer questions
- Performances showcasing the talent and opportunities offered at GRC Oatley Senior Campus

PRINCIPAL: Anna Girginis

Enquiries: 02 8567 3700

### PEAKHURST CAMPUS

Open Night – Tuesday 23 February  
6.30pm - 8.30pm

- Information session
- Campus tours
- Meet the teachers, students and parents of GRC Peakhurst Campus
- Displays and performances

PRINCIPAL: Terry Vallis

Enquiries: 02 9153 9966

### PENSHURST GIRLS CAMPUS

Open Night – Monday 22 February  
5.00pm - 7.30pm

- Principal's welcome and address
- Introduction to school staff
- Gifted and Talented class entry requirements
- Campus Tours
- Faculty displays, presentations and performances

PRINCIPAL: Noeline Ross

Enquiries: 02 9580 3141

## CONTACT DETAILS

### HURSTVILLE BOYS CAMPUS

Kenwyn Street Hurstville NSW 2220

Phone: 02 9587 3199

Email: [hurstvillb-h.school@det.nsw.edu.au](mailto:hurstvillb-h.school@det.nsw.edu.au)

[www.hurstvillb-h.schools.nsw.edu.au](http://www.hurstvillb-h.schools.nsw.edu.au)

### OATLEY SENIOR CAMPUS

Cnr Oatley Ave and Hurstville Rd Oatley NSW 2223

Phone: 02 8567 3700

Email: [oatleysnr-h.school@det.nsw.edu.au](mailto:oatleysnr-h.school@det.nsw.edu.au)

[www.oatleysnr-h.schools.nsw.edu.au](http://www.oatleysnr-h.schools.nsw.edu.au)

### PEAKHURST CAMPUS

Cnr Samuel & Rona Streets Peakhurst NSW 2210

Phone: 02 9153 9966

Email: [peakhurst-h.school@det.nsw.edu.au](mailto:peakhurst-h.school@det.nsw.edu.au)

[www.peakhurst-h.schools.nsw.edu.au](http://www.peakhurst-h.schools.nsw.edu.au)

### PENSHURST GIRLS CAMPUS

2 Austral Street Penshurst NSW 2222

Phone: 02 9580 3141

Email: [penshurstg-h.school@det.nsw.edu.au](mailto:penshurstg-h.school@det.nsw.edu.au)

[www.penshurstg-h.schools.nsw.edu.au](http://www.penshurstg-h.schools.nsw.edu.au)

### GEORGES RIVER COLLEGE ADMINISTRATION

Kenwyn Street Hurstville NSW 2220

Phone: 02 9587 6150