



School Uniform Policy

GRC Peakhurst Campus

The Department of Education and the Georges River College Peakhurst community supports the wearing of school uniform through its School Uniform Policy.

Our school believes wearing a school uniform will:

- Define an identity for our school within our community
- Promote and develop a sense of belonging for students and creates a positive identity for the school community.
- Build school spirit
- Enhance the health and safety of our students
- Promote a sense of inclusiveness, non-discrimination and equal opportunity
- Contribute the personal safety of students by allowing easier recognition of students inside the school and in the community
- Promote positive community perceptions of public education

Our school uniform policy takes into account the following uniform requirements to ensure the safety of all students. We require:

- Students to wear appropriate footwear. This includes fully enclosed black leather lace up shoes on Monday, Tuesday, Thursday and Friday (shoes with mesh / fabric uppers do not fit this criteria)
- Students are required to wear supportive sporting footwear on Wednesdays. (Fashion trainers do not meet this criteria)
- Students to wear appropriate eyewear or other protective clothing so as to avoid injury
- Students to wear a school hat for outside activities when appropriate
- That only discreet jewellery is worn. Items that have the potential cause an injury are to be left at home.

Our school expects that each student will wear their uniform:

- Every day during school hours
- While travelling to and from school
- When engaged in school activities out of school hours

Students who are not wearing full school uniform will be issued with a uniform note at the beginning of the day and will not be permitted on the playground for a period of time during recess and lunch.

SCHOOL UNIFORM

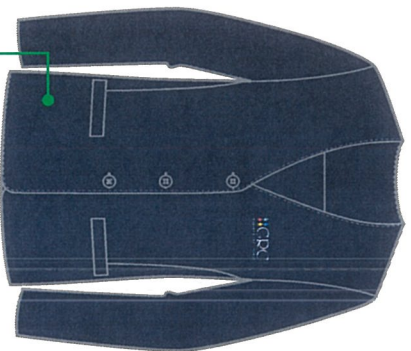
GRC Peakhurst Campus is a uniform school and all students must wear the correct uniform. All of the GRC campuses share a common uniform.

We care about our students and their image in the community. The way students present themselves conveys a strong message about the students themselves and about our school. Students must accept and share responsibility for our school's image in the community.

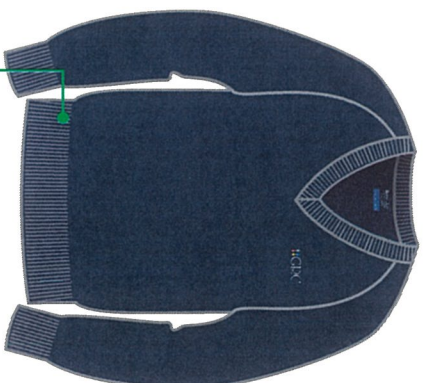
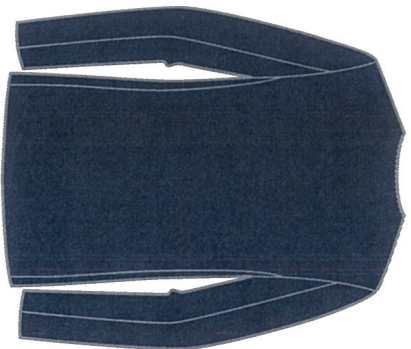
The Parents and Citizens' and student body have actively endorsed the wearing of school uniforms.

Please find attached the latest uniform guide provided by our uniform supplier Lowes.

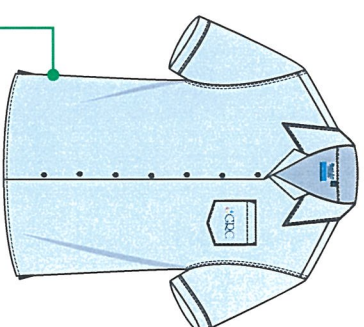
GEORGES RIVER COLLEGE - JUNIOR GIRLS



JUNIOR GIRLS BLAZER
- W/ EMB



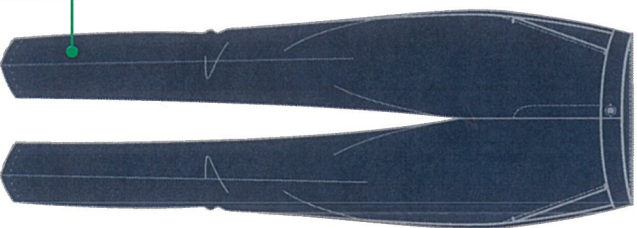
ALL YEARS PULLOVER
- NAVY BODY
- W/ EMB
59295



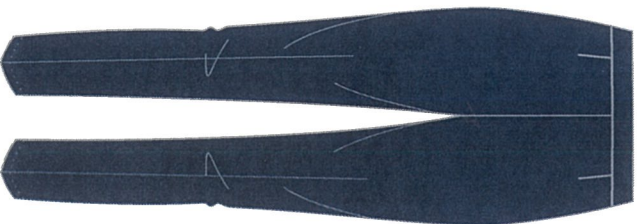
JNR SHORT SLEEVE BLOUSE
- SKY BODY
- W/ EMB



BACKPACK
- NAVY BODY
- W/ SCREEN PRINT



JUNIOR GIRLS PANTS



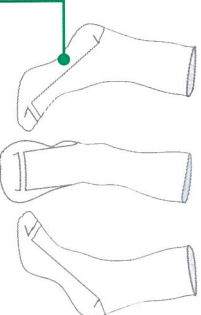
JUNIOR GIRLS SHORTS



JUNIOR GIRLS SKIRT
2 BOX PLEATS
#91857

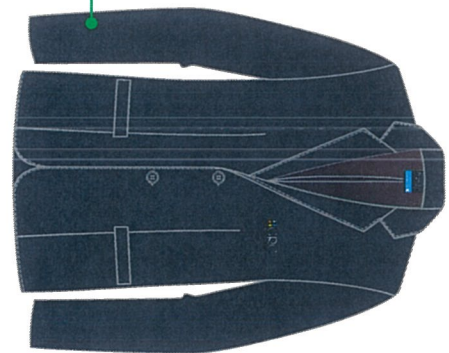


TIGHTS
-NAVY
#86260

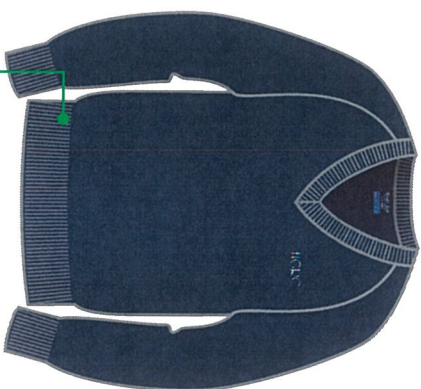


ANKLE SOCKS
- WHITE
#97978

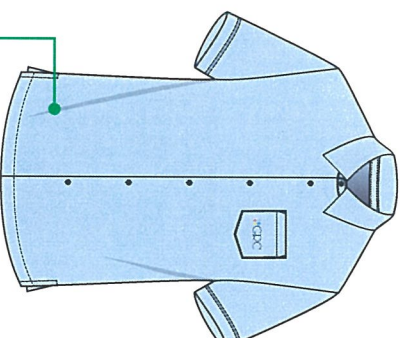
GEORGES RIVER COLLEGE - JUNIOR BOYS



JUNIOR BOYS BLAZER
- W/ EMB
98446



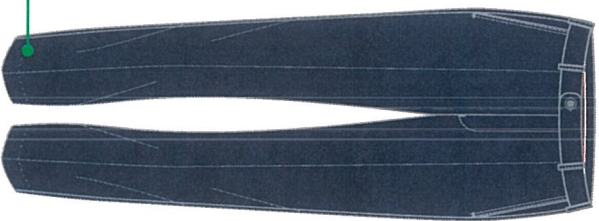
PULLOVER
- NAVY BODY
- W/ EMB
59295



JUNIOR BOYS DELUXE OVER SHIRT
- SKY BODY (NEW FABRIC)
- W/ EMB ON POCKET



TIE
- GOLD/RED/BLUE
STRIPES
- W/ EMB
#77325



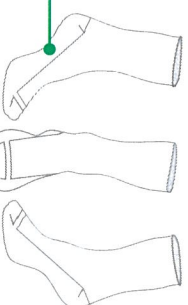
JUNIOR BOYS PANTS
- NAVY BODY



JUNIOR BOYS SHORTS
- NAVY BODY



BOYS BELT
- BLACK
#99011



ANKLE SOCKS
- WHITE
#97978

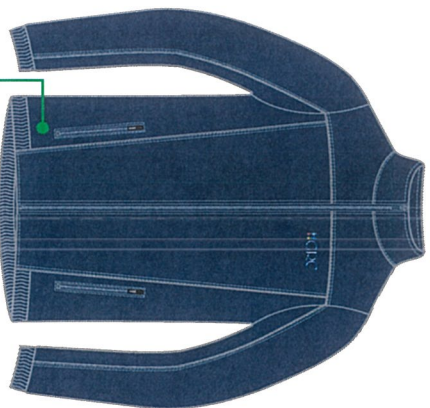


SCARF
- NAVY BODY
- W/ EMB
71226

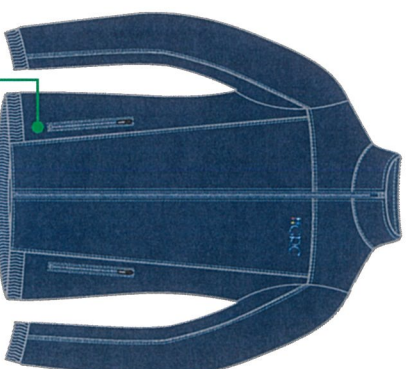


BACKPACK
- NAVY BODY
- W/ SCREEN PRINT

GEORGES RIVER COLLEGE SPORTS UNIFORM - UNISEX



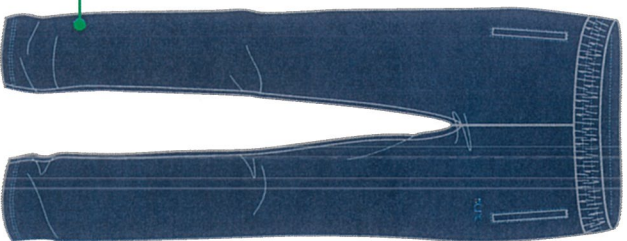
BOYS SOFT SHELL
- W/ EMB



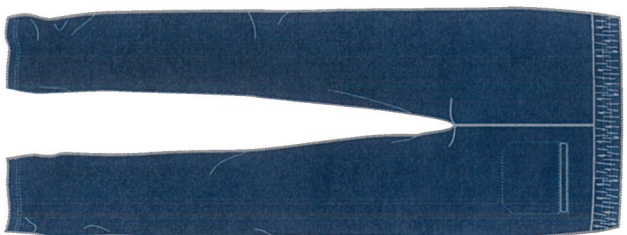
GIRLS SOFT SHELL
- W/ EMB



UNISEX SPORTS POLO
- W/ EMB
85053



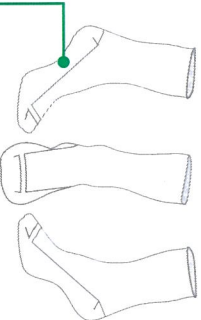
UNISEX TRACK PANTS
- NAVY BODY
- W/ EMB



UNISEX SPORTS SHORTS
- W/ SKY PIPING
- STRETCH MICROFIBRE
- W/ EMB



CAP
- NAVY BODY
- W/ WHITE & SKY
STRIPE
73120



ANKLE SOCKS
- WHITE
#97978

SCHOOL UNIFORM

SPECIAL NOTES REGARDING GIRLS' AND BOYS' UNIFORMS

- Sport uniform is to be worn on Wednesdays by all students.
- Plain navy rainproof jackets or a parka may be worn outdoors during inclement weather.
- A GRC cap is available for students to wear whilst at school. It is the only acceptable cap to be worn at school and may only be worn in the playground. A GRC cap is available from Lowes or the School Office.
- Students are to be neatly dressed and well groomed in their school uniform.
- Plain black school shoes must have covered leather uppers to satisfy safety requirements in specialist rooms.
- Clothing bearing logos or slogans are not permitted.
- Hoodies, denim, jeans, thongs and casual sandals are not permitted.
- Emergency clothing may be borrowed in the event of an accident.
- Jewellery, makeup, fingernails and hair colour must be discreet.
 - Jewellery: Sleepers or studs are the only acceptable type of earrings to be worn. One discrete neck chain is considered sufficient for religious purposes. Facial piercings are not allowed.
 - Make-up: It is school policy that minimal make-up may be worn. Only clear or light-coloured nail polish is acceptable. Please ensure that your child looks appropriate for school.
- Only white or flesh coloured undergarments are to be worn underneath the school blouse/shirt.

UNIFORM SUPPLIERS

Lowes Beare & Ley Pty Ltd
328 Forest Road, Hurstville
Phone: (02) 9157 2502

Lowes (Centro Roselands)
Roselands Dr, Roselands NSW 2196
Phone: (02) 9750 3771

GRC Peakhurst Campus P&C also operate a small second hand uniform shop in the schools front office. This shop is open each Wednesday morning from 8am – 9am.

If you are experiencing financial difficulty that is affecting your child wearing full school uniform, please contact your child's Year Adviser.

A GUIDE TO APPROPRIATE FOOTWEAR (SCHOOL SHOES)

Students are expected to wear traditional black leather lace-up school shoes as part of correct uniform. Diagrams illustrating appropriate school shoes are provided below.

**Covered + Leather + Supportive + Protective
(no mesh or fabric)**

ACCEPTABLE SCHOOL SHOES



UNACCEPTABLE FOOTWEAR



A GUIDE TO APPROPRIATE FOOTWEAR (SPORT SHOES)

On sport days (Wednesday) and for PDHPE lessons, students are expected to wear appropriate leather lace-up sport shoes that cover the top of the feet and are appropriate for physical activity. Diagrams illustrating appropriate sport shoes are provided below.

ACCEPTABLE SPORT SHOES



UNACCEPTABLE FOOTWEAR

