



GEORGES RIVER COLLEGE PEAKHURST CAMPUS
HSIE Faculty
NOTIFICATION OF ASSESSMENT TASK

Year: 7	Subject: HSIE (History)
Date due (Week 10A): 7P and 7T: Wednesday 30 th March 2022 7B, 7O, 7Y, 7V, 7I, and 7G: Thursday 31 st March 2022 7R: Friday 1 st April 2022	Hand-in or submit electronically on Google classroom
Weighting: 30%	Task Number: 2

Topic: Otzi the Iceman

- Syllabus outcomes:**
- 4.1 Describes and explains the nature of history, the main features of past societies and periods and their legacy
 - 4.4 Identifies major periods of historical time and sequences people and events within specific periods of time
 - 4.9 Uses historical terms and concepts in appropriate contexts

- Assessment criteria:**
- In your answer, you will be assessed on how well you:
- Demonstrate your knowledge of Otzi the Iceman.
 - Use and understand historical sources.
 - Write in proper essay structure, with correct paragraph structure using PEEL.
 - Use historical terms appropriately.

- Task Information:**
- You are required to write an extended response, which answers the question below:

Using the sources and your own knowledge, describe the discovery, life, and death of Otzi the Iceman.

- Your extended response must include all of the following:
 - Information relating to the discovery of the Iceman’s remains. Include evidence to support your description.
 - Information about his life from the body, clothing and equipment. Include evidence to support your description.
 - One theory from the investigation to explain how he died. Include evidence to support your explanation.
- Choose at least **TWO** sources provided as evidence to support your response.
- Submission requirements:
 - Clear and neat presentation is required in either hand-written or typed format
 - Answer all components **IN YOUR OWN WORDS**
 - You must include the marking criteria sheet with your assignment
 - USBs will not be accepted
 - You can submit your response electronically to **Google classroom**
 - If you submit electronically, your report must be saved as a Word doc, Google doc or PDF.

Google Classroom: Log into Google Classroom using your school email and your google classroom code (7O - 2dpgx42, 7Y – fkm6xi6, 7R – f4nilok, 7G – yhmbhwl, 7B – olkfobp, 7I – 2d7qptv, 7V – djzaaxw, 7P – virtgil, 7T – 6mlhway)

You MUST save your extended response as your name and your HSIE class e.g. John Smith 7 HSIE P Otzi. Go to ‘Submit your Otzi extended response HERE’ and follow the instructions.

IMPORTANT:

This task is part of your formal assessment for this subject. Tasks not submitted on the due date will receive zero. If you are sick on the due date, you will have to provide appropriate documentation such as a parent letter or medical certificate to support your appeal. This will need to be presented to Ms Diamond or your teacher on the morning of the first day you are back at school.

How to structure your extended response:

Use the table below to help you structure your extended response

<p>Paragraph 1: INTRODUCTION <i>(Do not write a heading)</i></p> <p><i>(Leave a line before you start the next paragraph)</i></p>	<ul style="list-style-type: none"> • Introduce the essay topic with an opening sentence. • Introduce your argument. • Outline your essay. • How will you prove your argument? • Final sentence before you start writing.
<p>Paragraph 2: BODY PARAGRAPH <i>(Do not write a heading)</i>- Discovery of Otzi's body</p> <p><i>(Leave a line before you start the next paragraph)</i></p>	<ul style="list-style-type: none"> • Point: This should come from your points listed in the Intro. Should directly answer question and make argument clear. • Explain: Provides more details and content to explain your point. • Evidence: Include evidence to prove your point. (Use sources) • Link: Link your paragraph back to the question and reinforce your argument.
<p>Paragraph 3: BODY PARAGRAPH <i>(Do not write a heading)</i>-Life of Otzi</p> <p><i>(Leave a line before you start the next paragraph)</i></p>	<ul style="list-style-type: none"> • Point: This should come from your points listed in the Intro. Should directly answer question and make argument clear. • Explain: Provides more details and content to explain your point. • Evidence: Include evidence to prove your point. (Use sources) • Link: Link your paragraph back to the question and reinforce your argument.
<p>Paragraph 4: BODY PARAGRAPH <i>(Do not write a heading)</i>-One theory on Otzi's death</p> <p><i>(Leave a line before you start the next paragraph)</i></p>	<ul style="list-style-type: none"> • Point: This should come from your points listed in the Intro. Should directly answer question and make argument clear. • Explain: Provides more details and content to explain your point. • Evidence: Include evidence to prove your point. (Use sources) • Link: Link your paragraph back to the question and reinforce your argument.
<p>Paragraph 5: CONCLUSION <i>(Do not write a heading)</i></p>	<ul style="list-style-type: none"> • Restate your argument and directly answer the question. • Summarise the main points you made to prove your argument. • How was your argument proved using evidence?

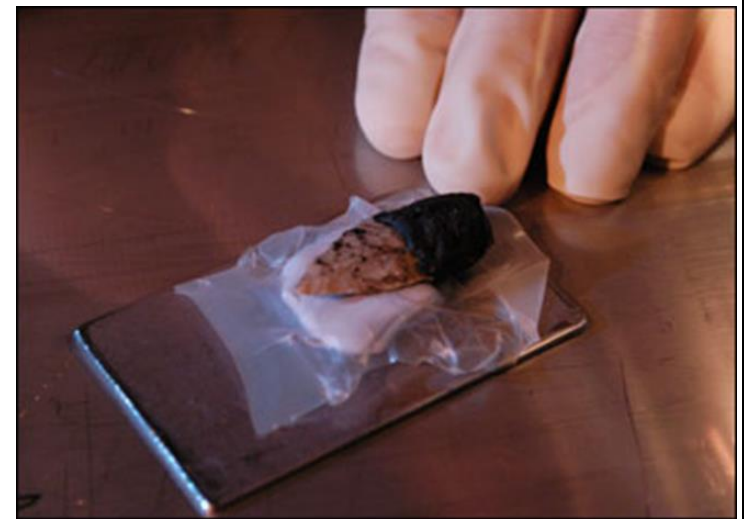
Historical Sources to support your response

(Choose at least **two** of the following sources in your response).



Source A: Map showing the discovery site of Otzi the Iceman

Source B: An arrowhead found embedded in his left shoulder.



Source C: Recreation of clothing of Otzi the Iceman.

Marking Criteria

Name: _____ Class: _____

Content Marking Criteria (20)

<ul style="list-style-type: none">• Accurately describes the discovery of Otzi's remains• Extensively describes Otzi's life from the body, clothing and equipment• Explicitly explains ONE theory about Otzi's death• Uses all historical sources effectively to strongly support your argument• Expertly communicates in written form using the appropriate essay structure and excellent PEEL paragraph writing• Appropriately uses a wide range of historical terms in a sophisticated manner	<p>17 – 20</p> <p>A</p>
<ul style="list-style-type: none">• Thoroughly describes the discovery of Otzi's remains• Describes with detail Otzi's life from the body, clothing and equipment• Explains ONE theory about Otzi's death• Uses all historical sources effectively to support your argument• Communicates in written form using the appropriate essay structure and very good PEEL paragraph writing• Appropriately uses a range of historical terms in a sophisticated manner	<p>13 – 16</p> <p>B</p>
<ul style="list-style-type: none">• Describes the discovery of Otzi's remains• Briefly describes Otzi's life from the body, clothing and equipment• Gives some explanation of ONE theory about Otzi's death• Uses two historical sources to support your argument• Communicates in written form using the appropriate essay structure and adequate PEEL paragraphing• Appropriately uses a number of historical terms	<p>9 – 12</p> <p>C</p>
<ul style="list-style-type: none">• Basically describes the discovery of Otzi's remains• Limited description of Otzi's life• Outlines ONE theory about Otzi's death• References one historical sources• Communicates in written form using a basic essay structure and simple PEEL paragraph format• May use some historical terms	<p>5 – 8</p> <p>D</p>
<ul style="list-style-type: none">• Little or no reference to the discovery of Otzi's remains• Very limited description of Otzi's life• Little or no reference to ONE theory about Otzi's death• No use of historical sources• Poorly communicates in written form in an incorrect essay structure, with inconsistent use of PEEL• Little or no use of historical terms.	<p>1 – 4</p> <p>E</p>

Total Mark: /20

Comment: _____
